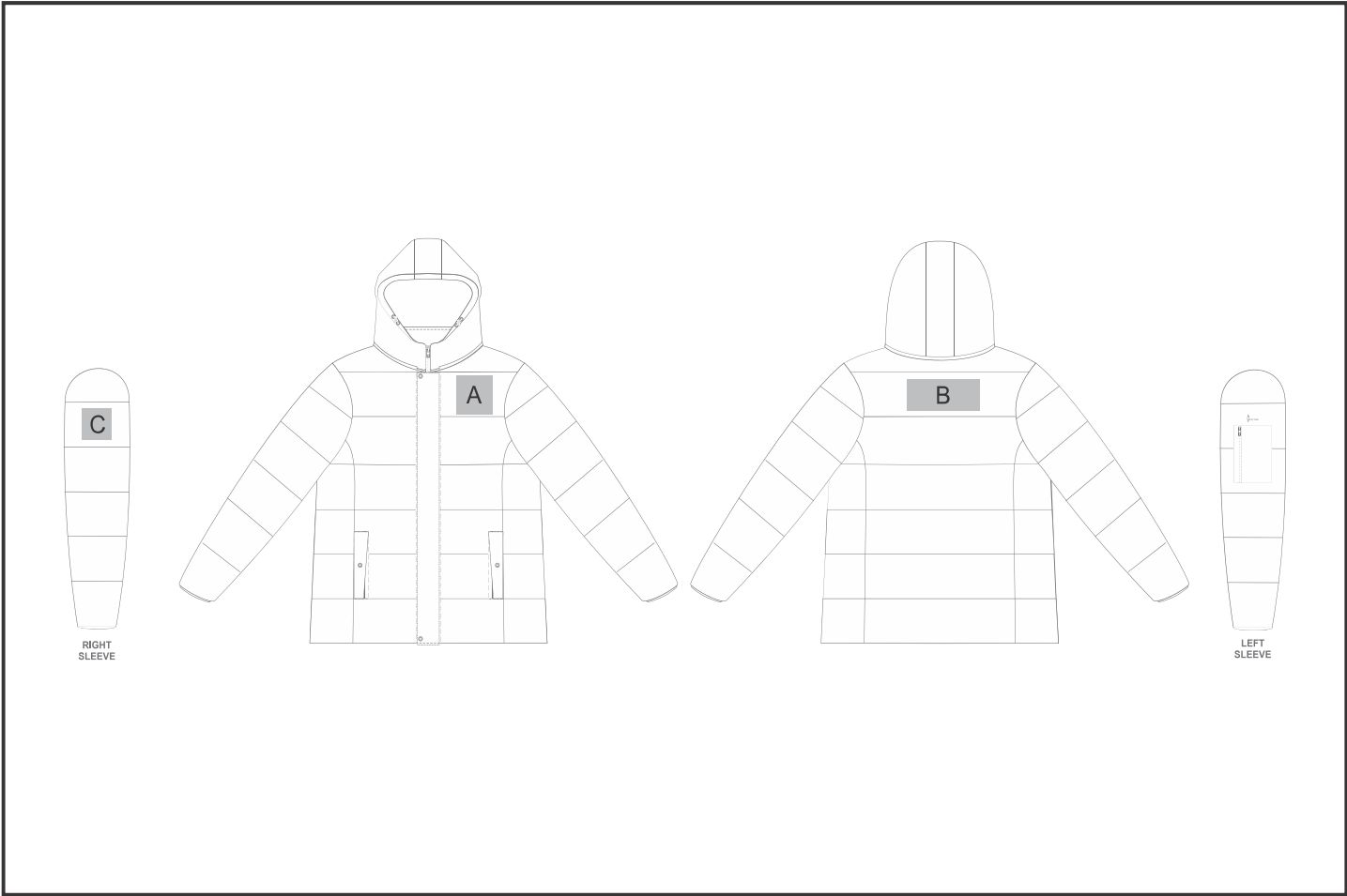


JC-AV-128-A

Mens Alex Varga Montpellier Jacket



Need to know:

- Includes 1-Position Embroidery (setup fees apply)
- **EMB inclusive parameters:** Left/Right Chest or Back = 100mm x 100mm
- EMB: No Branding on Right Chest and Right Sleeve.
- The panels on the garment are inconsistent from Small to XL.
- The logo will be branded in the closest left chest and back panel, to the standard left chest and back position.

Branding Options:

| Position | Branding Method (Branding Code) | No. of Colours | Dimension |
|----------|---------------------------------------|----------------|-------------------------|
| A | Embroidery (EM-CLOTHING) | N/A | 100mm wide x 60mm high |
| A | Digital Transfer Clothing A6 (DTC-A6) | Full Colour | 100mm wide x 100mm high |
| A | Silicone (STP-A) | N/A | 30mm wide x 30mm high |
| A | Silicone (STP-B) | N/A | 50mm wide x 50mm high |
| A | Silicone (STP-C) | N/A | 80mm wide x 80mm high |

| | | | |
|---|---------------------------------------|-------------|------------------------|
| B | Embroidery (EM-CLOTHING) | N/A | 150mm wide x 80mm high |
| B | Digital Transfer Clothing A6 (DTC-A6) | Full Colour | 148mm wide x 80mm high |
| B | Digital Transfer Clothing A5 (DTC-A5) | Full Colour | 150mm wide x 80mm high |
| B | Silicone (STP-A) | N/A | 30mm wide x 30mm high |
| B | Silicone (STP-B) | N/A | 50mm wide x 50mm high |
| B | Silicone (STP-C) | N/A | 80mm wide x 80mm high |
| B | Silicone (STP-D) | N/A | 120mm wide x 40mm high |

| | | | |
|---|---------------------------------------|-------------|-----------------------|
| C | Digital Transfer Clothing A6 (DTC-A6) | Full Colour | 80mm wide x 50mm high |
| C | Silicone (STP-A) | N/A | 30mm wide x 30mm high |
| C | Silicone (STP-B) | N/A | 50mm wide x 50mm high |